



REGIONAL SPECIALISED METEOROLOGICAL CENTRE-TROPICAL CYCLONES, NEW DELHI
TROPICAL CYCLONE ADVISORY BULLETIN NO. 11

FROM: RSMC –TROPICAL CYCLONES, NEW DELHI

TO: STORM WARNING CENTRE, NAYPYI TAW (MYANMAR)
STORM WARNING CENTRE, BANGKOK (THAILAND)
STORM WARNING CENTRE, COLOMBO (SRILANKA)
STORM WARNING CENTRE, DHAKA (BANGLADESH)
STORM WARNING CENTRE, KARACHI (PAKISTAN)
METEOROLOGICAL OFFICE, MALE (MALDIVES)
OMAN METEOROLOGICAL DEPARTMENT, MUSCAT (THROUGH RTH JEDDAH)
YEMEN METEOROLOGICAL SERVICES, REPUBLIC OF YEMEN (THROUGH RTH JEDDAH)
NATIONAL CENTRE FOR METEOROLOGY, UAE (THROUGH RTH JEDDAH)
PRESIDENCY OF METEOROLOGY AND ENVIRONMENT, SAUDI ARABIA (THROUGH RTH JEDDAH)
IRAN METEOROLOGICAL ORGANISATION, (THROUGH RTH JEDDAH)
QATAR METEOROLOGICAL DEPARTMENT (THROUGH RTH JEDDAH)

TROPICAL CYCLONE ADVISORY NO. 11 FOR NORTH INDIAN OCEAN (THE BAY OF BENGAL AND ARABIAN SEA) VALID FOR NEXT 120 HOURS ISSUED AT 1330 UTC OF 03.06.2020 BASED ON 1200 UTC OF 03.06.2020.

SUB: **CYCLONIC STORM 'NISARGA'** OVER INTERIOR MAHARASHTRA

THE SEVERE CYCLONIC STORM '**NISARGA**' OVER COASTAL MAHARASHTRA MOVED NORTHEASTWARDS WITH A SPEED OF ABOUT 23 KMPH DURING PAST 06 HOURS, WEAKENED INTO A **CYCLONIC STORM** AND LAY CENTRED AT 1200 UTC OF TODAY THE 03RD JUNE, 2020 OVER INTERIOR MAHARASHTRA, NEAR LATITUDE 19.0°N AND LONGITUDE 73.7°E, 90 KM EAST OF MUMBAI (43003) AND 50 KM NORTH-NORTHWEST OF PUNE (43063).

IT IS VERY LIKELY TO MOVE NORTHEASTWARDS AND WEAKEN INTO A DEEP DEPRESSION BY 1500UTC OF 3RD JUNE 2020

FORECAST TRACK AND INTENSITY ARE GIVEN IN THE FOLLOWING TABLE:

DATE/TIME(UTC)	POSITION (LAT. °N/ LONG. °E)	MAXIMUM SURFACE (KMPH)	SUSTAINED WIND SPEED	CATEGORY OF CYCLONIC DISTURBANCE
03.06.20/1200	19.0/73.7	60-70	GUSTING TO 80	CYCLONIC STORM
03.06.20/1800	19.7/74.3	50-60	GUSTING TO 70	DEEP DEPRESSION
04.06.20/0000	20.5/75.0	40-50	GUSTING TO 60	DEPRESSION
04.06.20/0600	21.1/75.5	30-40	GUSTING TO 50	DEPRESSION

AS PER INSAT-3D SATELLITE IMAGERY BASED ON 1200 UTC OF 03RD JUNE, THE SYSTEM HAS FURTHER WEAKENED OVER THE LAND. INSAT 3D FURTHER SHOWS ASSOCIATED BROKEN LOW/MEDIUM CLOUDS WITH EMBEDDED INTENSE TO VERY INTENSE CONVECTION OVER EASTCENTRAL ARABIAN SEA BETWEEN LATITUDE 13.0 °N TO 20.0°N AND LONGITUDE 70.0°E TO 75.0°E. MINIMUM CLOUD TOP TEMPERATURE (CTT) IS MINUS 86°C.

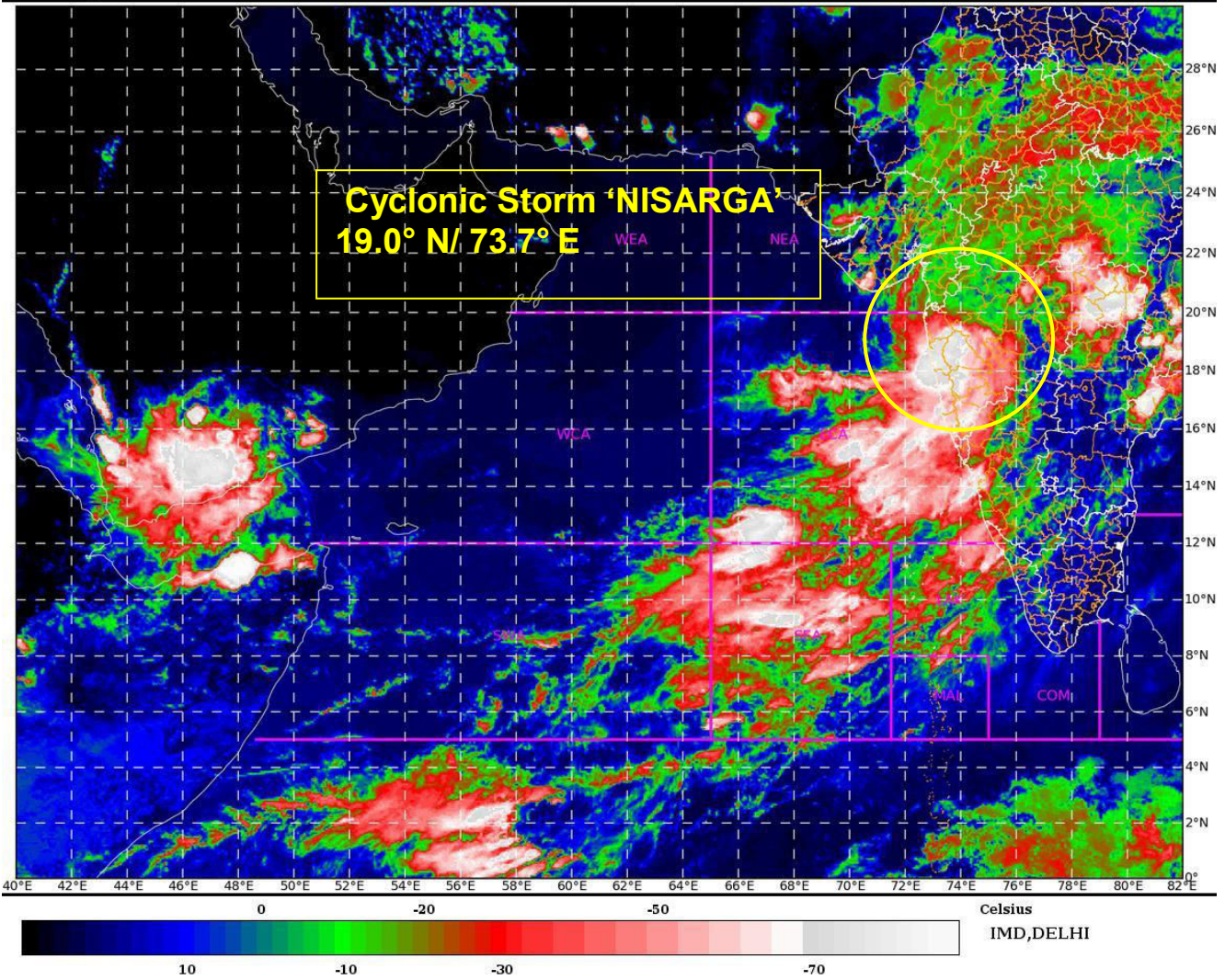
(RK JENAMANI)
SCIENTIST-F AND HEAD,
RSMC, NEW DELHI

PROBABILITY OF CYCLOGENESIS (FORMATION OF DEPRESSION)

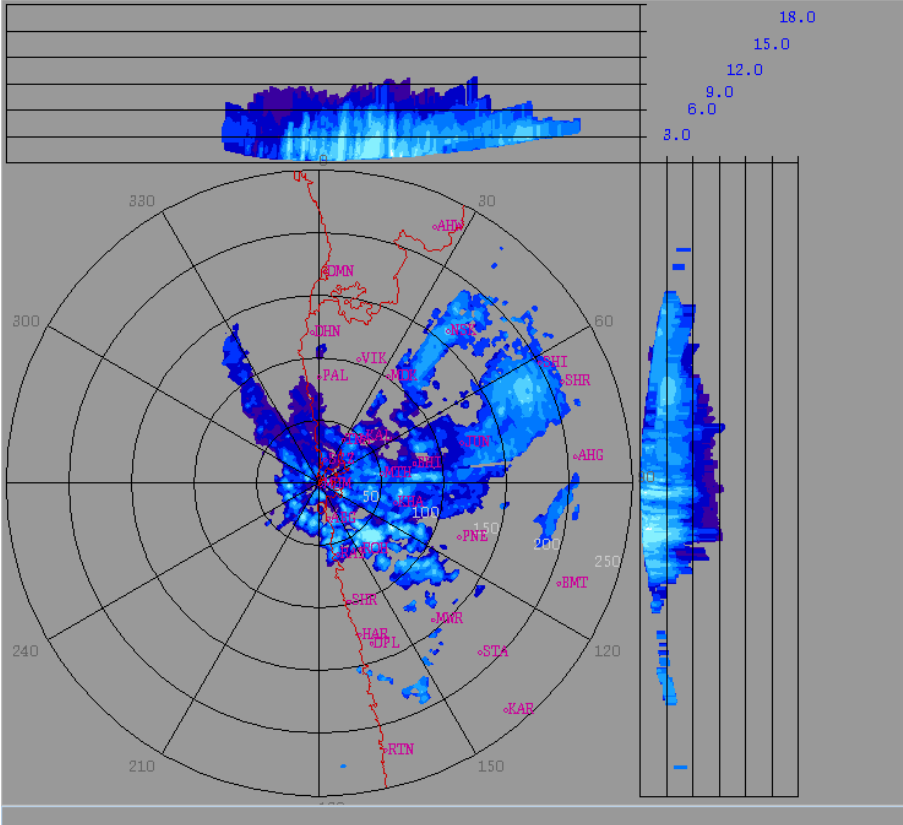
NIL: 0%, LOW: 1-25%, FAIR: 26-50%, MODERATE: 51-75% AND HIGH: 76-100%

SAT : INSAT-3D IMG
IMG_TIR1_TEMP 10.8 um
ARABIAN_SEA

03-06-2020/(1230 to 1256) GMT
03-06-2020/(1800 to 1826) IST



PROBABILITY OF CYCLOGENESIS (FORMATION OF DEPRESSION)
NIL: 0%, LOW: 1-25%, FAIR: 26-50%, MODERATE: 51-75% AND HIGH: 76-100%



Height	: 18.0 Km
Layer Spacing	: 0.100 Km
Z (Lo, Hi)	: -32.0, 95.0 dBZ
Grid size	: 1 Km
Display Range	: 250 Km
Display Res	: 1.0 Km/Pix
DDR Enable	: Yes
Scan Elev (Lo, Hi)	: 0.2, 21.0 Deg
PRF (Lo, Hi)	: 450, 600 Hz
Scan Res	: 150 mts
Scan RPM	: 2.0
Log Threshold	: 2 dB
DTP	: 42
Pulse Width	: 1.0
Notch Width	: 54.0 Hz
SQL	: 0.25
CSR	: 20
Scan Range	: 240 Km
Preprocessings	: NONE

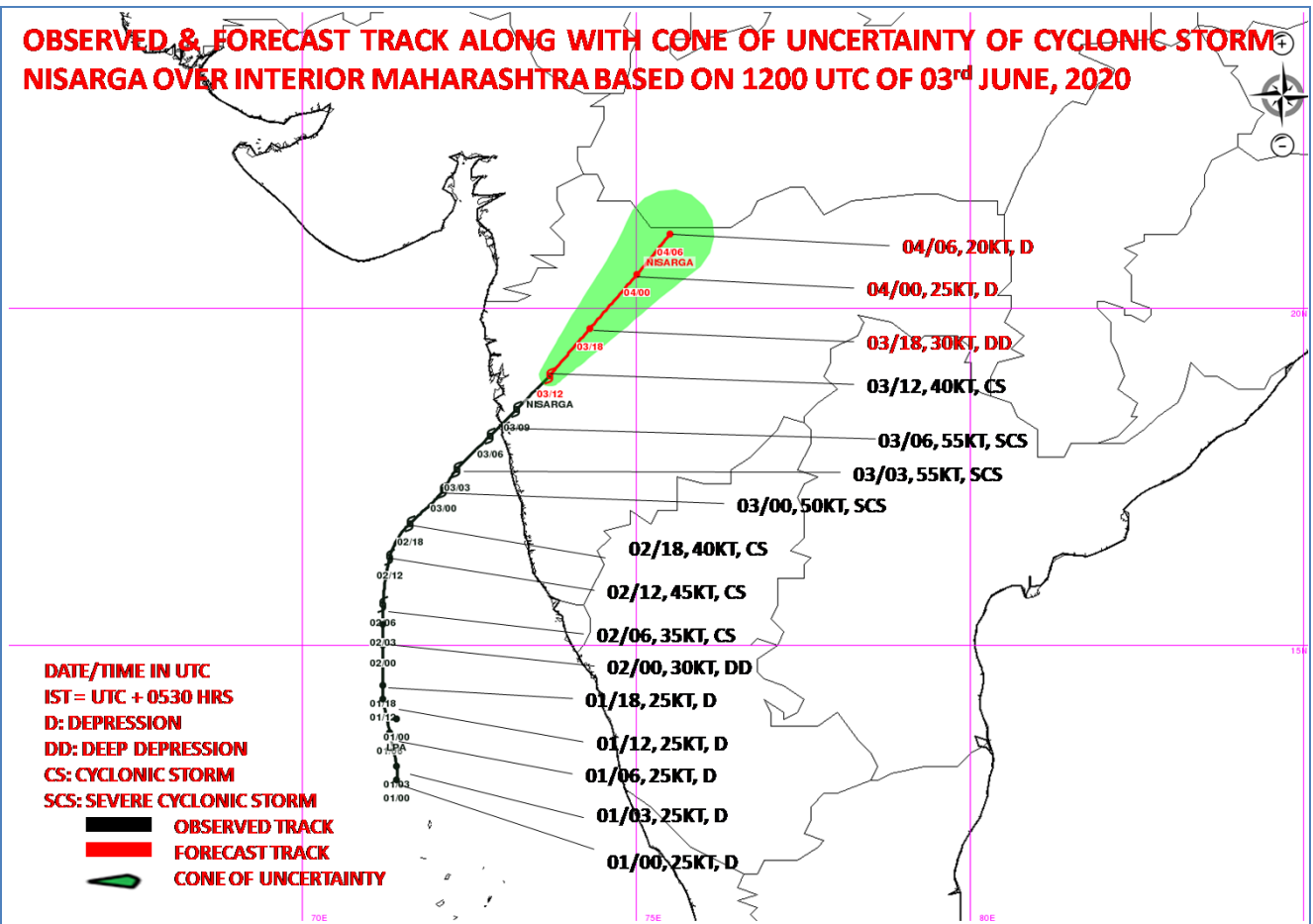
dBZ	
No Data	
60.7: > 65.0	
56.4: 60.7	
52.1: 56.4	
47.8: 52.1	
43.5: 47.8	
39.2: 43.5	
34.9: 39.2	
30.7: 34.9	
26.4: 30.7	
22.1: 26.4	
17.8: 22.1	
13.5: 17.8	
9.2: 13.5	
4.9: 9.2	
0.6: 4.9	

DOPLER WEATHER RADAR MUMBAI AT 14:39:13 HOURS IST OF 03.06.2020

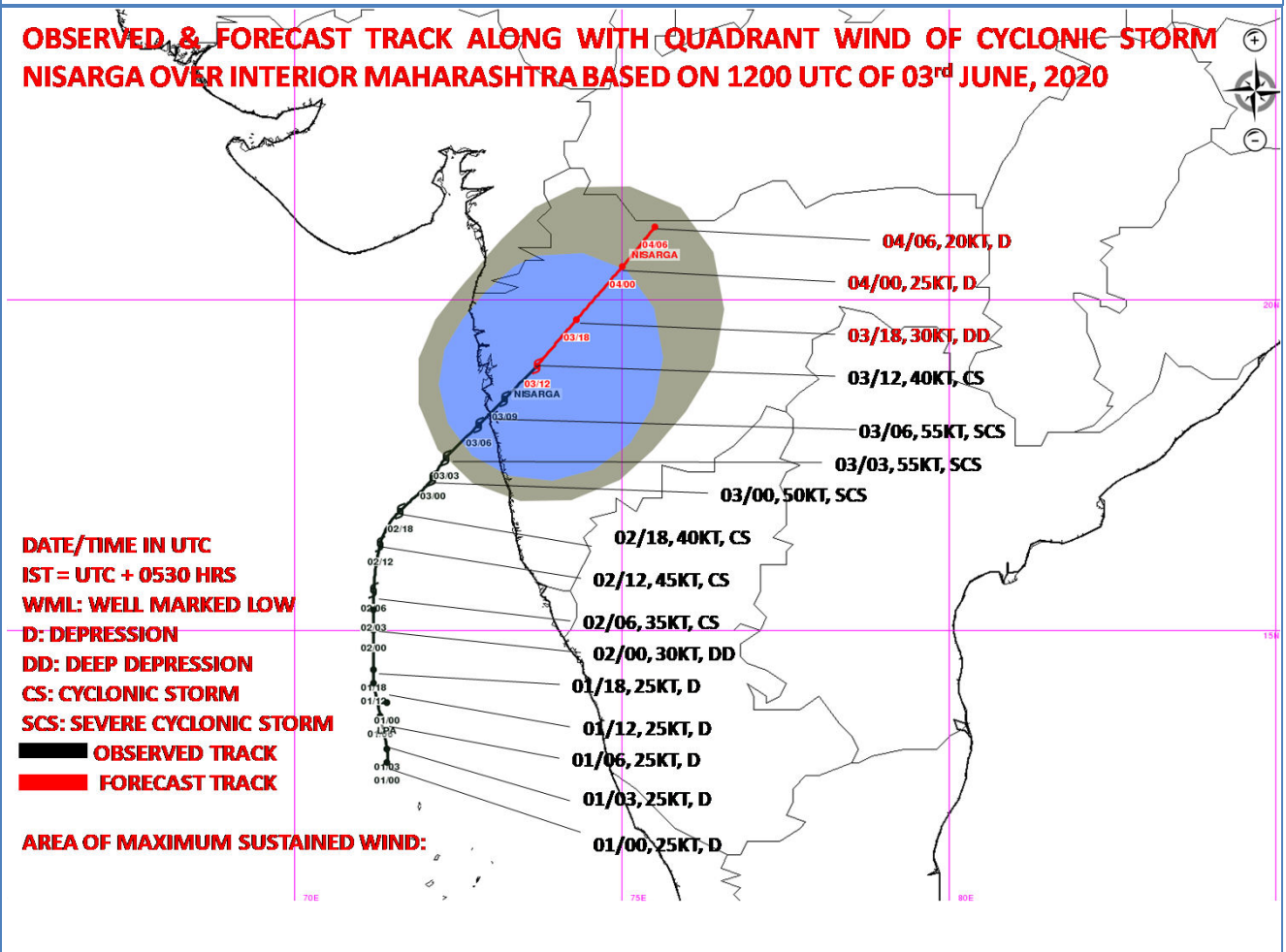
PROBABILITY OF CYCLOGENESIS (FORMATION OF DEPRESSION)

NIL: 0%, LOW: 1-25%, FAIR: 26-50%, MODERATE: 51-75% AND HIGH: 76-100%

OBSERVED & FORECAST TRACK ALONG WITH CONE OF UNCERTAINTY OF CYCLONIC STORM NISARGA OVER INTERIOR MAHARASHTRA BASED ON 1200 UTC OF 03rd JUNE, 2020



OBSERVED & FORECAST TRACK ALONG WITH QUADRANT WIND OF CYCLONIC STORM NISARGA OVER INTERIOR MAHARASHTRA BASED ON 1200 UTC OF 03rd JUNE, 2020



PROBABILITY OF CYCLOGENESIS (FORMATION OF DEPRESSION)

NIL: 0%, LOW: 1-25%, FAIR: 26-50%, MODERATE: 51-75% AND HIGH: 76-100%